

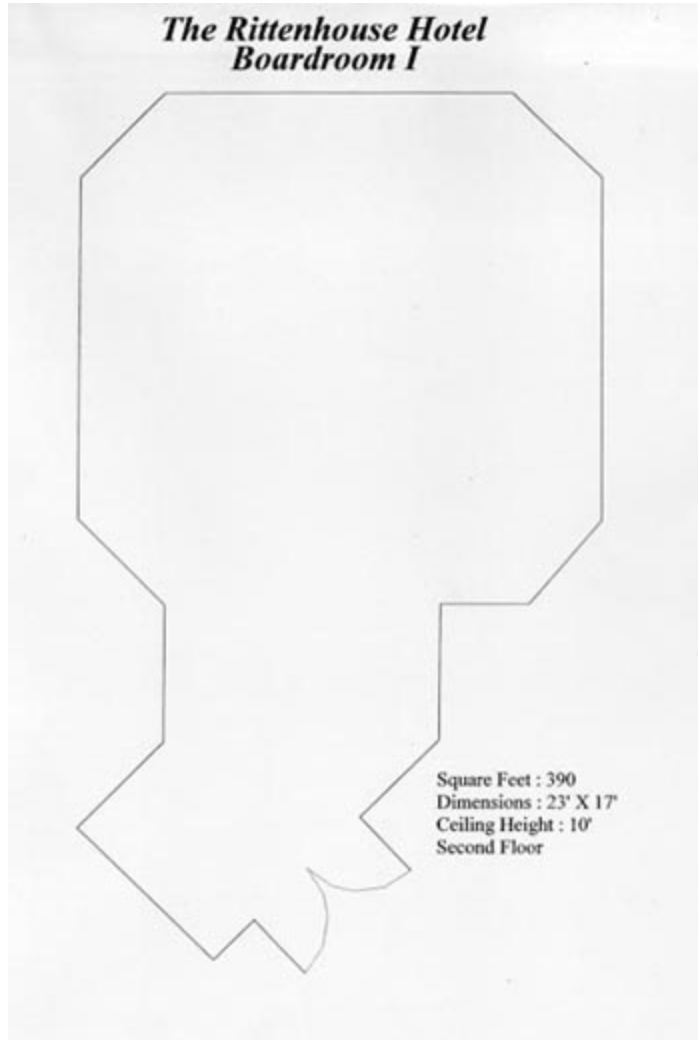
Boardrooms

Capacity Chart: -

Seating Capacity

| Boardrooms | I | II | Marie Fedock |
|-------------|---------|---------|--------------|
| Square Feet | 390 | 350 | 340 |
| Dimension | 23 x 17 | 25 x 14 | 20 x 17 |
| Height | 10' | 10' | 8' |
| Theater | - | - | - |
| Classroom | - | - | - |
| Dining | 12 | 12 | 12 |
| Reception | - | - | - |
| Conference | 12 | 12 | 12 |
| U Shape | - | - | - |

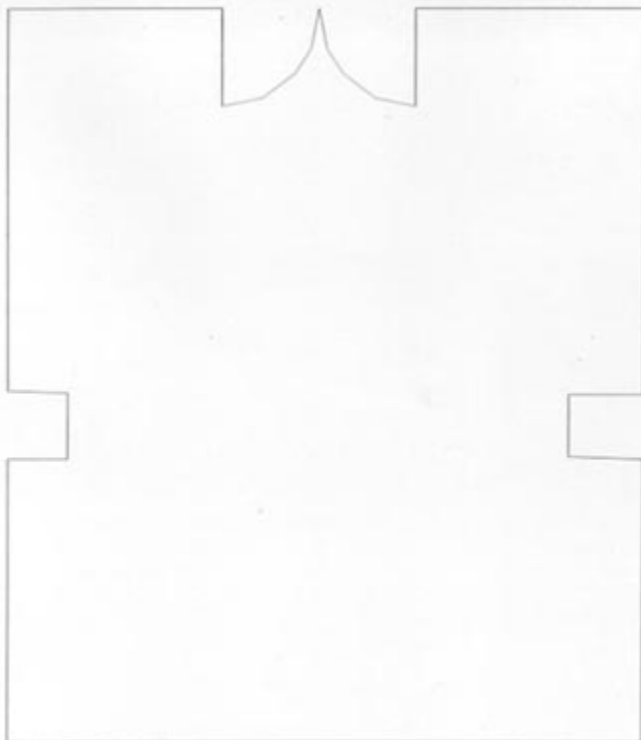
FLOOR PLANS :-



***The Rittenhouse Hotel
Boardroom II***

Square Feet : 350
Dimensions : 25' X 14'
Ceiling Height : 10'
Second Floor

The Rittenhouse Hotel
Marie Fedock Boardroom



Square Feet : 340
Dimensions : 20' X 17'
Ceiling : 8'
First Floor